



# Swedish National Public Transport Agency (Rikstrafiken)

Sumburgh 22:nd November 2007



[WWW.RIKSTRAFIKEN.SE](http://WWW.RIKSTRAFIKEN.SE)



## **Rikstrafiken – a brief overview**

Was established as an Governmental agency in 1999, following a government decision on a new transport policy

is subordinate to the Ministry of Industry, Employment and Communications, and has two main tasks:



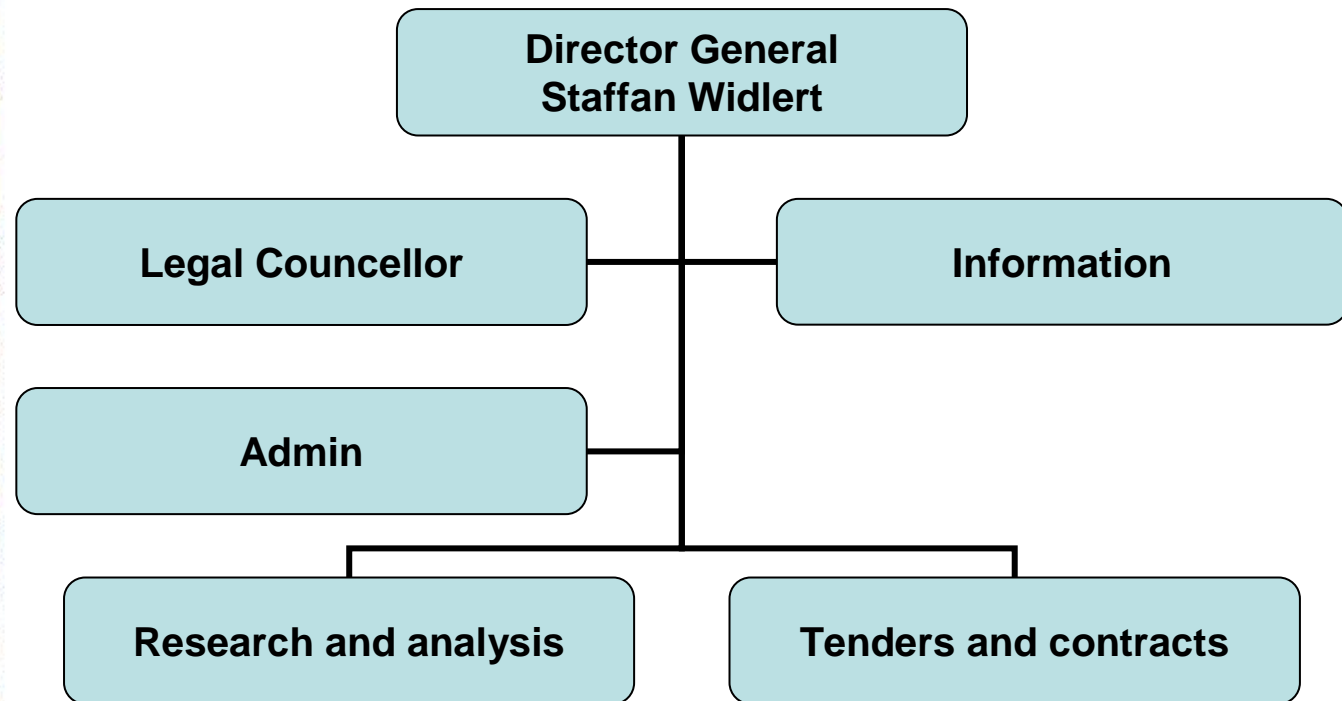
## Rikstrafiken – a brief overview

- To foster and coordinate public transport throughout Sweden
- To procure interregional public transport, by air, rail, sea and land, which would not be commercially viable



# Rikstrafiken's organisation

Total number of employees 20





## **Rikstrafiken – a brief overview**

The objective of the government transport policy is to secure a socio-economically efficient and long-term transport supply for the entire country. Rikstrafiken puts the transport policy into effect together with the rail, road, sea and aviation administrations and authorities.



## Transport procurement

The funds that Rikstrafiken has at its disposal are not reserved for any certain transport type.

After mapping flaws in the long-distance public transport sector, Rikstrafiken decides which transport to procure and which transport type to choose.

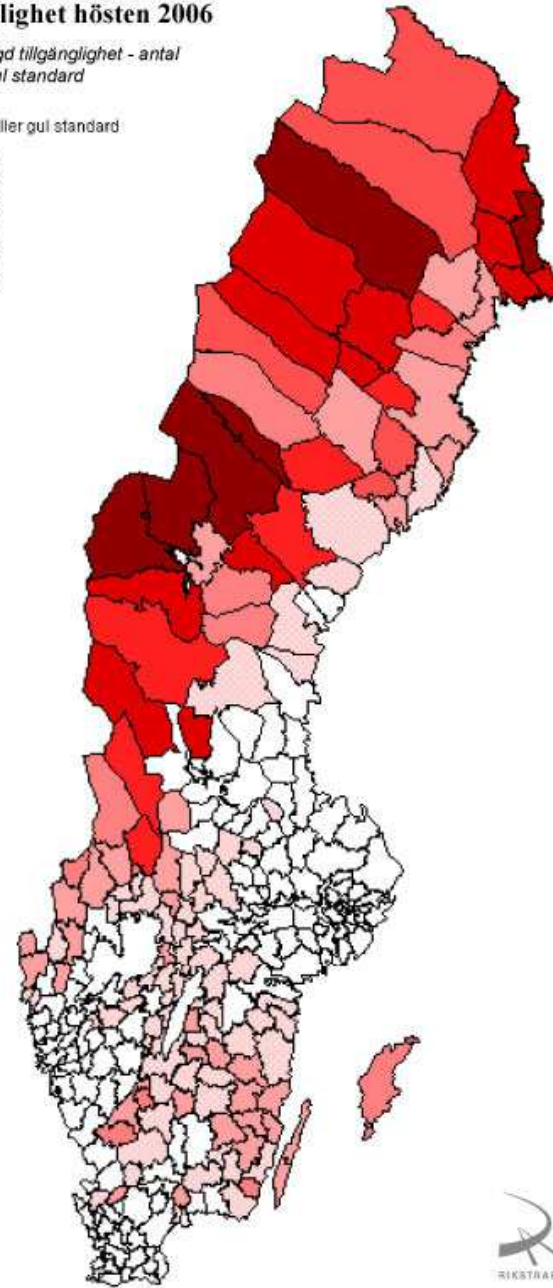


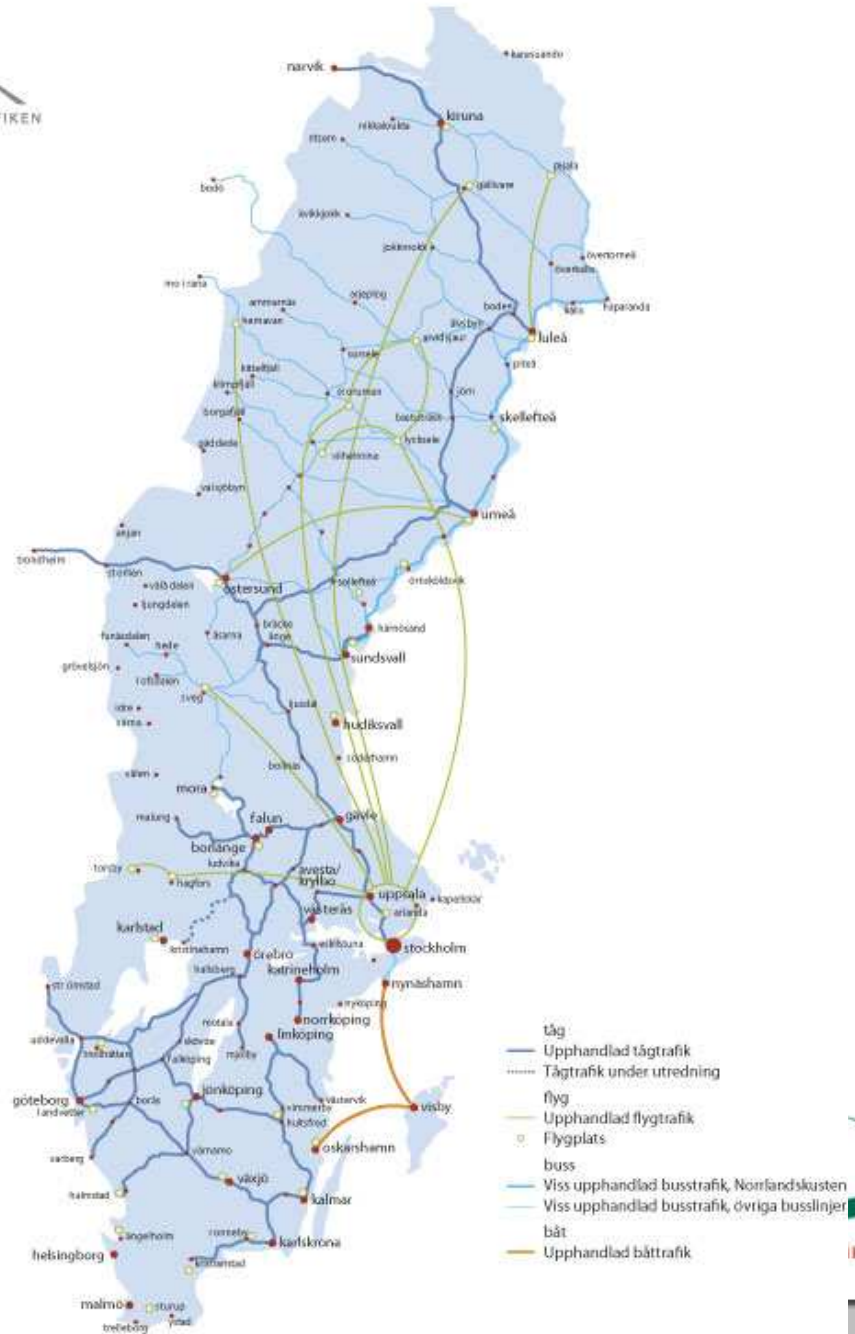
## Tillgänglighet hösten 2006

Sammanvägd tillgänglighet - antal  
grön eller gul standard

Antal grön eller gul standard

0	(5)
1	(12)
2	(7)
3	(5)
4	(11)
5	(35)
6	(65)
7	(149)







## Transport procurement

Rikstrafiken handles transport and cooperation agreements worth over SEK 900 divided into more than 25 agreements for 2006



# Transport procurement

*Traffic-related data 2006*

## **RAIL**

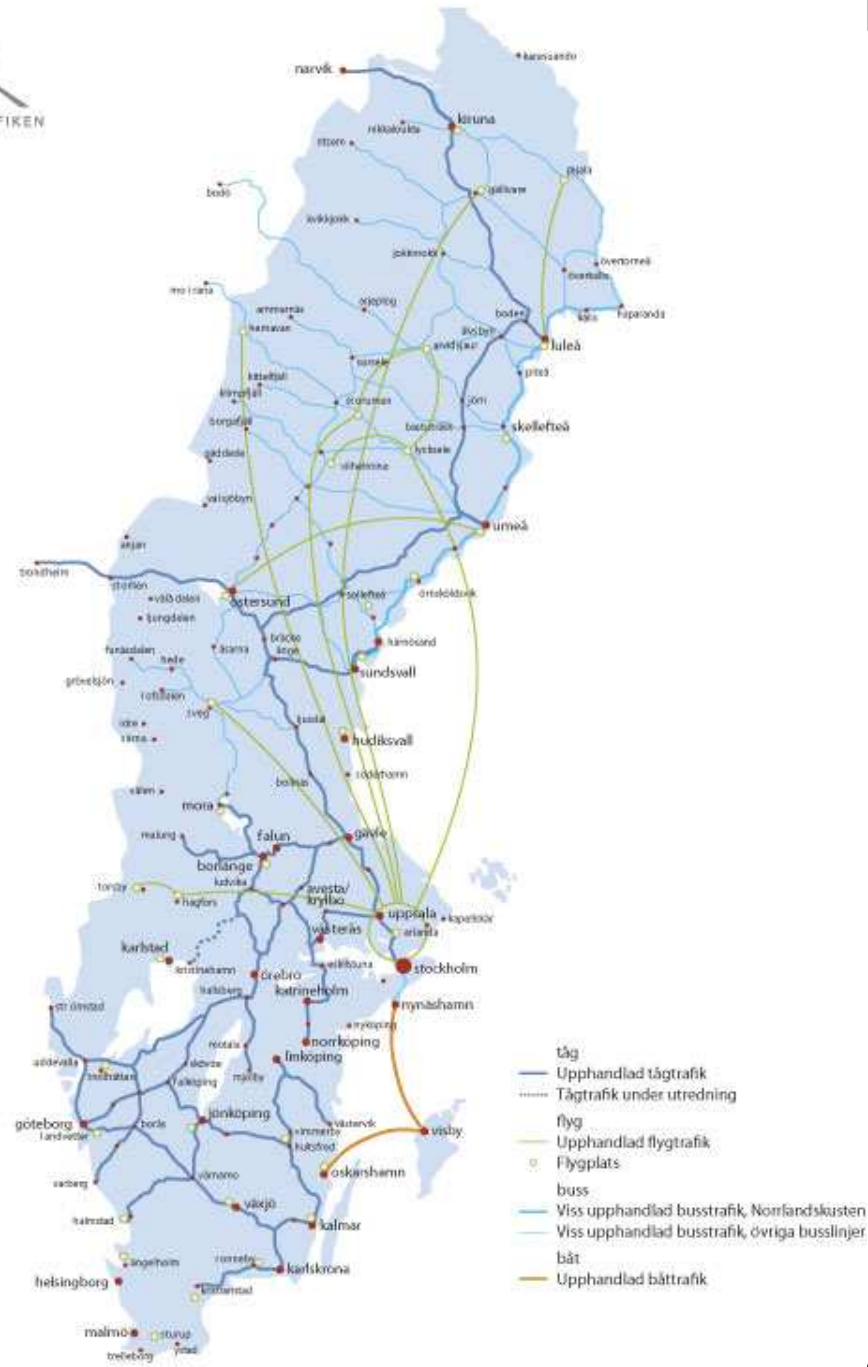
Number of railway trips in procured traffic: **11 680'**

Rikstrafiken's average cost per journey (SEK): **29**

## **FERRY**

Number of ferry trips in procured traffic: **1 472'**

Rikstrafiken's average cost per journey (SEK): **164**





# Transport procurement

## *Cost Specification for Procured Traffic (SEKM) 2006*

Rail transports	330
Ferry transports	400
Bus transports	90
Air transports	75



## Transport procurement

*Traffic-related data 2006:*

### **BUS**

Number of bus trips in procured traffic: **3 852'**

Rikstrafiken's average cost per journey (SEK): **22**

### **AIR**

Number of air trips in procured traffic: **160'**

Rikstrafiken's average cost per journey (SEK): **471**